

# BMS

## TEACH YOUR EMPLOYEES TO TAKE CARE AND BE CAREFUL...

Do it with our  
efficient and flexible  
**e-learning system**  
for better working  
environment,  
health and  
safety

EASY TO  
UNDER-  
STAND

ILLU-  
STRATED

EASY TO  
READ

TEXT  
AND  
SPEAK



# E-LEARNING – raise the safety bar

## Improve safety culture by continuous training and education

The level of safety in your company depends on the behavior of your employees. It is imperative to stimulate safe behavior, training and education. With our efficient e-learning system, you will ensure continuous education within relevant subjects, customised to the area of work for each employee.

## Reduce time spent on instruction and education

The BMS e-learning system is flexible and enables you and your employees to complete instruction, training and education whenever it suits you.

## Meet requirements for instruction beforehand

It is the employer's duty to instruct their employees in how to perform their job. By implementing the BMS e-learning system, you will easily comply herewith and document the newly achieved skills.

## Supplement with your own educations to the e-learning system

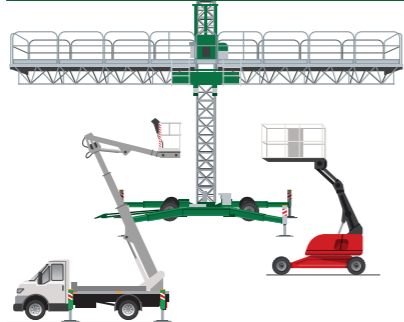
BMS e-learning system contains a range of ready-made educations as listed below. But you also have the possibility to add to the system and develop other educations in co-operation with BMS, to meet your own particular requirements for training.

### WORKING AT HEIGHT



– Is an education for everyone who works with Working at Height – for those who actually work at height, but also for those who stay on the ground.

### MOBILE ELEVATING PLATFORMS



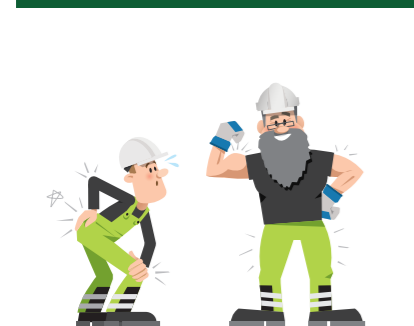
– For everyone who uses mobile elevating platforms, such as boom lifts, scissor lifts, working platforms or similar.

### RIGGING AND SLINGING



– For everyone who works with rigging and slinging like chauffeurs, crane operators and technicians. This education contains rules about methods, equipment and ways of communication.

### MANUAL HANDLING



– Caters to anyone performing manual handling, such as lift, carry, pull, push or tow.

### SECURING LOADS



– For chauffeurs in the haulage business, who work with lashing/securing transported goods.

### DANGEROUS GOODS – chapter 1.3



– Meant for logistics planners and chauffeurs who plan and carry out transportation of dangerous goods below the exemption quantity or with limited quantities.

# E-LEARNING – learn, understand and pass the test

Education	Status
Concrete element installation	Not completed
BMS Policies	Completed
Working at height	Not completed
Wind turbine installation and service	Not completed
Lift work in general	Completed
Manual handling	Completed
General crane work	Not completed
Rigging and slinging	Not completed

**Personal Protective Equipment (PPE)**

There are 2 correct answers to this question.

When must you use safety footwear?

- Wherever there is a risk of objects falling on your feet
- At workshops
- All sites where it is required
- At the bathroom

## EASY and intuitive approach

Educations in the e-learning system are easy to access. Structured with intuitive keys, icons and an overview that makes it easy for both users and local administrators. Each education is organised with theoretical slides and a subsequent multiple choice test.

## EASY TO READ and simple terminology

Each education is kept in an easy-to-read language. All texts are read out aloud to help employees with reading challenges as much as possible, to increase comprehension and thereby enhance the opportunity to pass the tests.

## EXPLANATORY illustrations

“A picture is worth a thousand words”. Illustrations help to explain the message and clarify the text in the entire e-learning system. It improves comprehension and with narration of all texts, employees with reading challenges are supported optimally.

## WELL-FUNCTIONING statistics for recording and follow-up

An extensive statistics program shows all data in manageable files for employees as well as administrators. It simplifies the daily work for the company health and safety organisation.

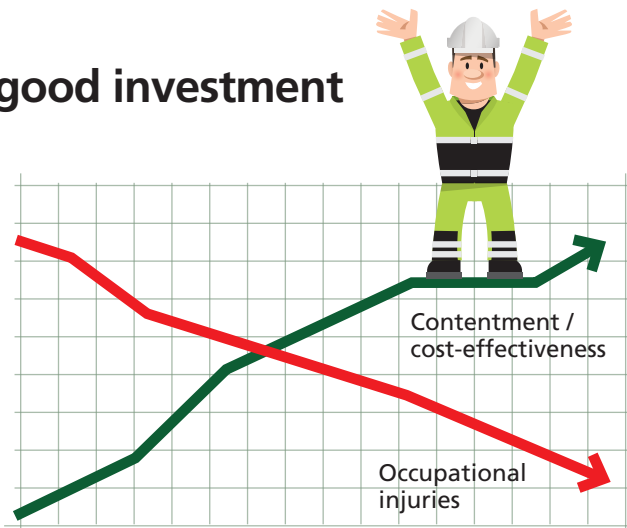


Bruger	Firmanavn	Afdeling	Uddannelse	Status	Certifikat	Valg
Ali K Jensen	Aarsleff	Offshore	Kran generelt	Bestået	Print pdf	Ret Slet
Jak K Jensen	Aarsleff	Offshore	Element montage	Bestået	Print pdf	Ret Slet
Ali K Jensen	Aarsleff	Offshore	Arbejdsring	Bestået	Print pdf	Ret Slet
Bent Pedersen	Aarsleff	Offshore	Element montage	Bestået	Print pdf	Ret Slet
Claus Jensen	Aarsleff	Offshore	Kran generelt	Ej gennemført	–	Ret Slet
Dorthe Jensen	Aarsleff	Offshore	Element montage	Bestået	Print pdf	Ret Slet
Ejner Jørgensen	Aarsleff	Offshore	Element montage	Bestået	Print pdf	Ret Slet
Frank Hansen	Aarsleff	Offshore	Kran generelt	Ej gennemført	–	Ret Slet
Georg Hansen	Aarsleff	Jord Beton	Element montage	Print pdf	Bestået	Ret Slet
Henrik Jensen	Aarsleff	Offshore	Element montage	Print pdf	Bestået	Ret Slet
Miguel Johansen	Aarsleff	Offshore	Kran generelt	Ej gennemført	–	Ret Slet
Jens K Jensen	Aarsleff	Jord Beton	Element montage	Bestået	Print pdf	Ret Slet
Kurt Jensen	Aarsleff	Jord Beton	Element montage	Bestået	Print pdf	Ret Slet
Lars Hansen	Aarsleff	Jord Beton	Element montage	Bestået	Print pdf	Ret Slet
Morten Pedersen	Aarsleff	Offshore	Element montage	Bestået	Print pdf	Ret Slet
Niels Nielsen	Aarsleff	Jord Beton	Element montage	Bestået	Print pdf	Ret Slet

# E-LEARNING – a good investment

By using the BMS e-learning system your company will obtain increasing contentment amongst employees and the health and safety organisation. The objective is also to optimise time and resources spent and of course to reduce the number of occupational injuries.

Access to the e-learning system implies an individually specified investment. The price depends on several factors: Number of employees, which educations you need and for how long. Every single customer need is analysed and assessed and the investment determined accordingly.



## How to get started:

### 1. CONTACT BMS FOR A DEMO

Contact BMS to find out about your opportunities in the e-learning system and get a demonstration of the various educations, the contents, the test method and the statistics.

### 2. CLARIFYING YOUR NEEDS

Your specific requests for safety educations via BMS e-learning system is discussed and determined.

### 3. BASIS FOR CONTRACT IS WORKED OUT

Proposition for a contract including financial agreement is made.

### 4. LAUNCH E-LEARNING

Right after approval of the contract, your e-learning will be launched. BMS-support concerning implementation and use of the e-learning system is available.

### 5. CURRENT EVALUATION

Your benefits from the e-learning system will be assessed, according to agreement.

# BMS

BMS HQ  
Sofiendalsvej 94  
9200 Aalborg SV  
+45 72 42 02 00  
mail@bms.dk